

HF-E



Hydraulic Steering System

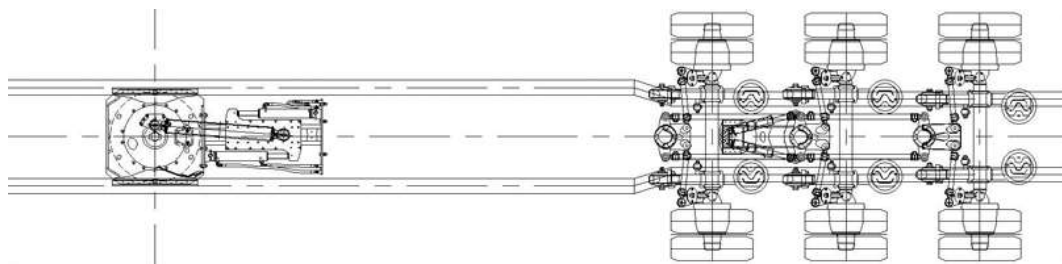


The hydraulic steering system
for steered axles on (semi) low loaders



Winning advantages

The hydraulic steering system for steered axles for heavy duty transport or special transports with up to seven steered axles



When construction equipment, bridge components or other extremely large and heavy parts are to be transported, extreme demands are placed on the vehicle's manoeuvrability. The hydraulic steering system HF-E from TRIDEC allows the steering of up to seven axles on (semi) low loaders.

The HF-E system thereby improves the manoeuvrability of the vehicle during heavy duty transports as well as for transports involving extra-length or height and it is also suitable for extendible trailers.

The HF-E system can also be equipped with the TRITRONIC manual control, which makes the vehicle even more manoeuvrable.

Increased accessibility

- Ideal manoeuvrability
- Highest stability
- Improved agility

Noticeable savings

- Lower fuel consumption
- Less tyre wear
- Low maintenance
- Protection against vehicle and collateral damages

Increased comfort

- Low ground level
- Increased loading height
- Improved safety
- Improved driver comfort
- Maximum steering angle of 45°

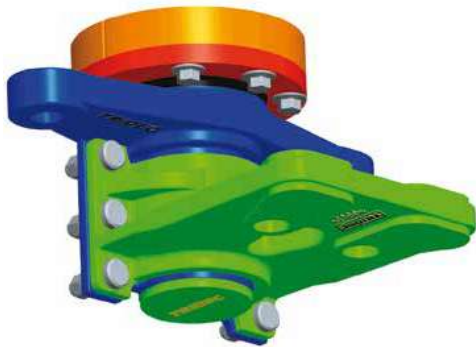
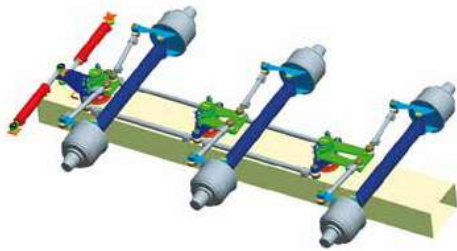
Optimally adjustable

with the TRITRONIC manual control

- Wireless manual control or via cable
- Automatic axle alignment
- Nine additional dual-effect hydraulic functions or 18 electrical functions possible (or a combination of both)



Winning technology



Engineering

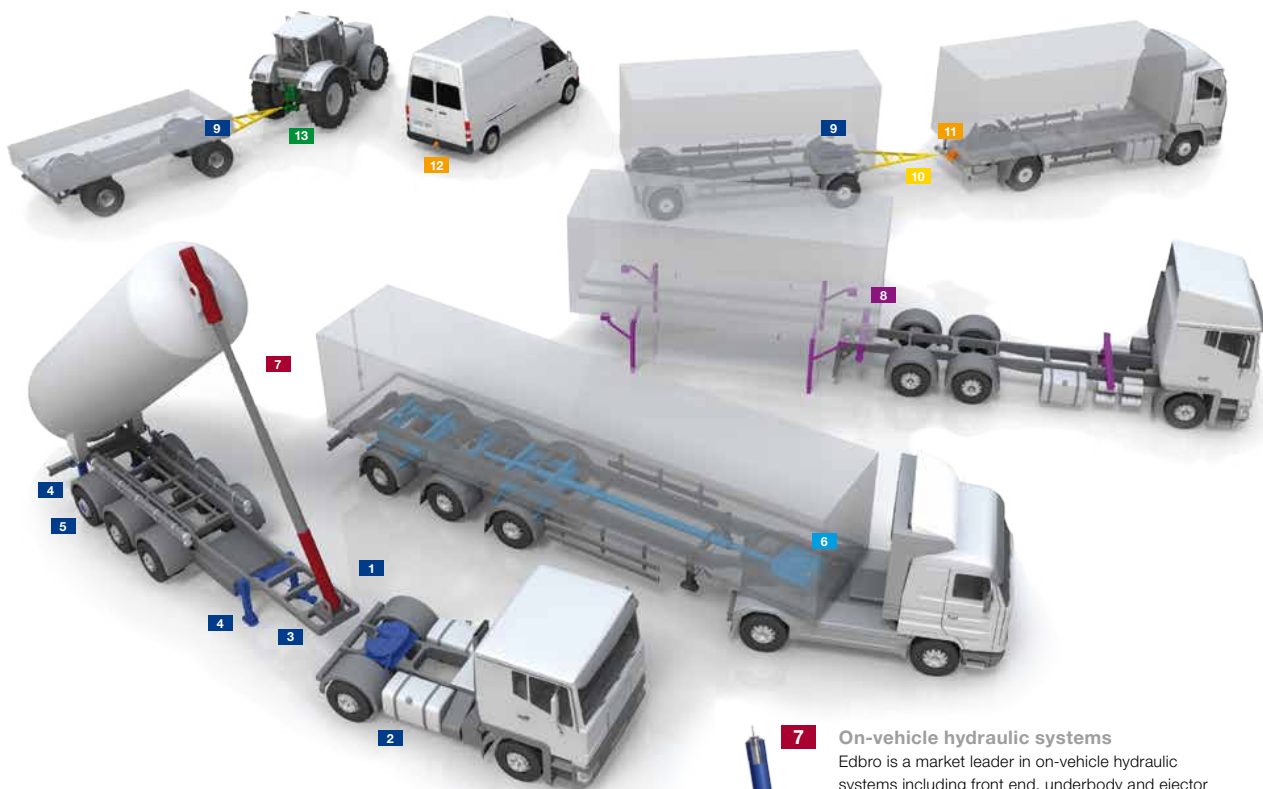
TRIDEC features a progressive department Engineering which supports the entire technical preparation and execution of your order. A turning circle calculation can be performed with specially developed software, which, taking statutory regulations into account, simulates the road space your trailer requires. We can combine your and our system to a single unit (in consultation with the department Engineering) using interference checking and construction recommendations. The result is an ideal steering behaviour combined with minimal tyre wear.

Maintenance

Maintenance of the HF-E system from TRIDEC is limited to lubricating the fifth wheel plate several times, a visual inspection of the hydraulic components and retightening the bolt connections. The steering lever bearing in the HF-E system requires little maintenance. This low maintenance requirement is the result of using high-quality materials and durable construction. The rim bearings have a special sealing. All lubricating points are grouped together in an easily accessible location.

TRIDEC is an innovative company specialised in the development and manufacture of mechanical and hydraulic steering systems and axle suspension systems for all types of towed vehicles. TRIDEC has been part of JOST-World since 2008.

Products JOST-World



1

Systems

Sensor-controlled systems monitor and automate manual processes, thus providing for more safety and efficiency in your fleet.



2

Fifth wheel couplings

We offer a wide selection of fifth wheel couplings, 2" and 3 1/2" in a wide variety of mounting heights, bearing types and models. The program is completed by mounting plates, sliders and dual height fifth wheel systems.



3

King pins

King pins are available in 2" and 3 1/2" for all systems in various models.



4

Modul landing gear

Any customer specs can be fulfilled thanks to the landing gear's modular construction with variable mounting and bolting heights, its differing crank and connection shaft lengths and its four different foot types. Furthermore, JOST offers a multitude of special landing gears for special applications.



5

Hubodometer

The range of products includes various hubodometers for calculating the distance driven, independent of the vehicle, for all types of wheeled vehicles.



6

TRIDEC

TRIDEC develops and produces – independent from axle or trailer manufacturer – mechanically, hydraulically and electronically controlled steering systems for trailers as well as axle suspension systems.



7

On-vehicle hydraulic systems

Edbro is a market leader in on-vehicle hydraulic systems including front end, underbody and ejector cylinders, waste handling equipment and customised hydraulic kit solutions.



8

Container equipment

Parts for alternating systems, supports, locks and bolsters, swap body lifting devices, guide rollers and bearings – all components required in a flexible fleet.



9

Ball bearing turntables

The ball bearing turn tables and slewing rings were the first products that JOST produced. The wide range of top-quality ball bearing turn-tables is based on this experience.



10

Drawbars and drawbar eyes

Drawbars and towing eyes are available in various models and can be designed to suit the customer's specific needs.



11

Towing hitches

There is a multi-faceted range of products for road traffic available – towing hitches, hook trailer hitches, towing eyes, accessories and special models.



12

VARIOBLOC

VARIOBLOC is a multi-functional alternating system for transporters, cross-country vehicles and busses. Courtesy of a quick-change plate, it enables towing hitches, hitch balls or hook trailer hitches to be changed rapidly.



13

Agricultural hitches

An extraordinarily extensive range of products for agriculture and forestry: Towing hitches, trailer trestles, clutch carriers, towing eyes, drawbars and accessories.

JOST **ROCKINGER** **TRIDEC** **Edbro**

TRIDEC, Transport industry development centre bv, Ekkersrijt 6030, 5692 GA Son – The Netherlands
Tel. +31 499 49 10 50, Fax +31 499 49 10 60, info@tridec.com, www.tridec.com