

Drop legs



Strong drop legs with low weight

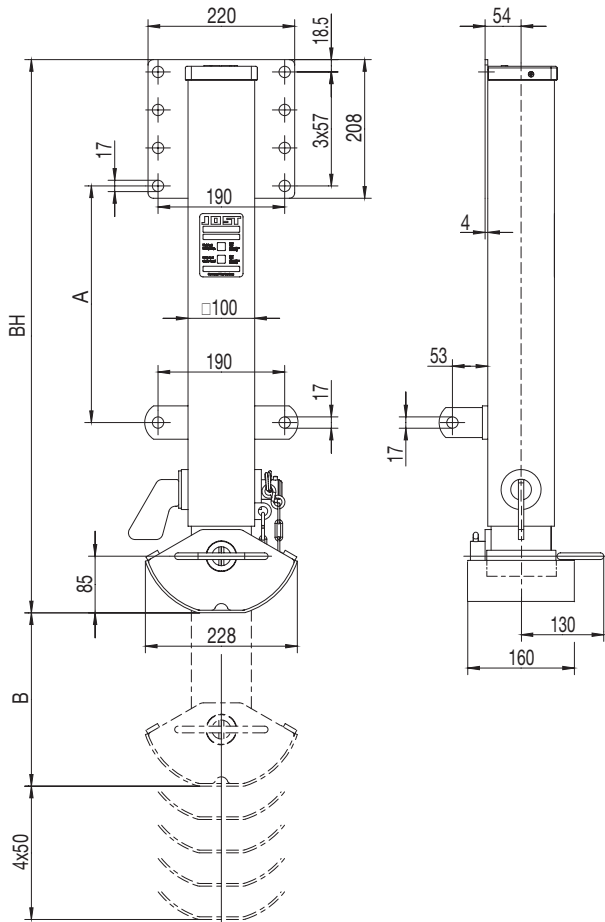
The steel drop leg FS075 and the aluminum drop leg FA027 are an optimal addition to our range of Modul landing gears. They are ideal for applications that require low weight and where uncoupling is rarely needed. They are particularly characterized by:

- Low weight
- Robust steel design or lightweight aluminum design
- Maintenance-free
- User-friendly
- Steel drop leg optionally with sand shoe or compensating foot, aluminium drop leg with compensating foot
- 5 different mounting heights
- Finely graduated drop extension adjustable in multiple ways

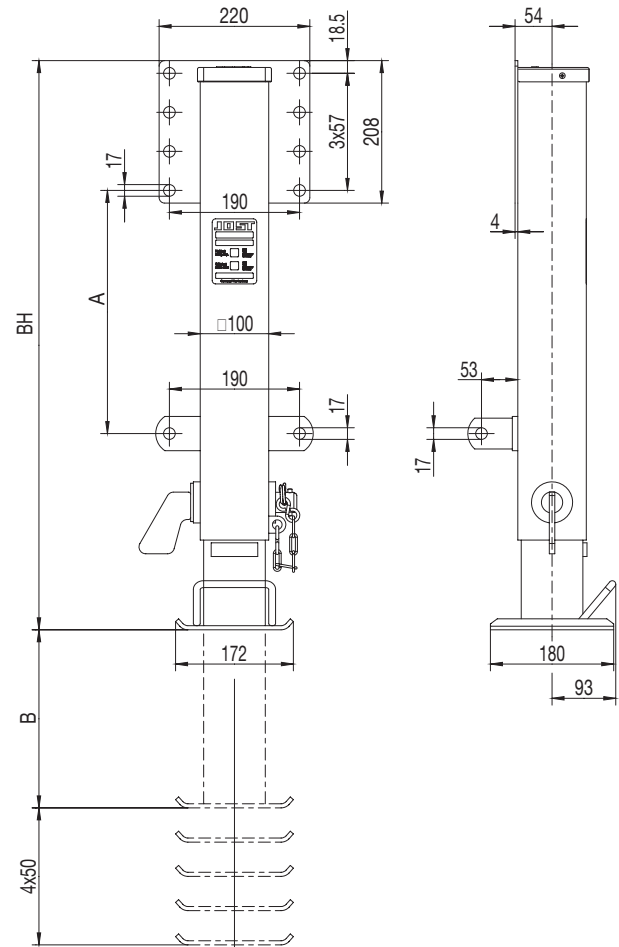
FS 075 Drop leg steel

Technical specifications

A foot



T foot



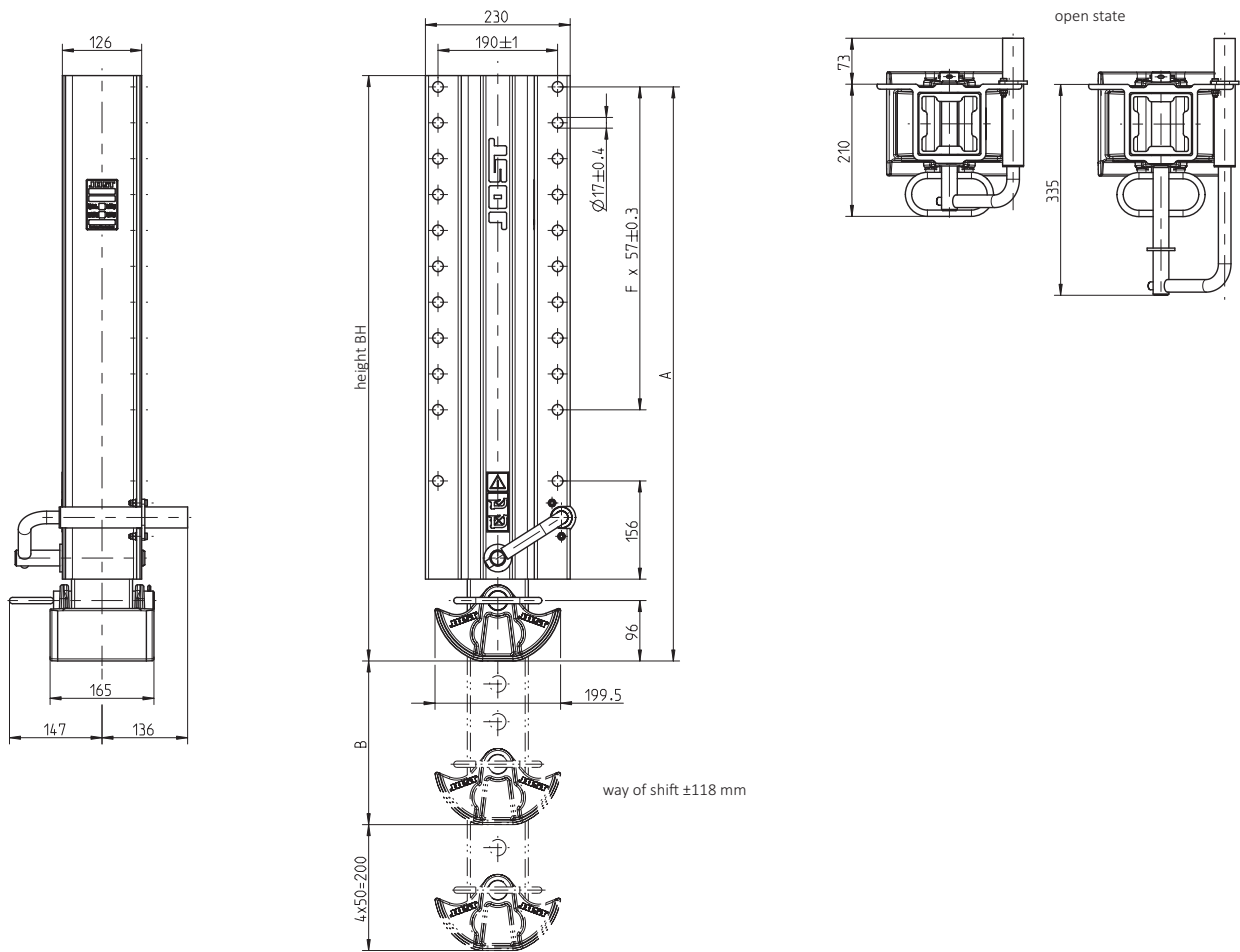
Order No. Operation left	Order No. Operation right	Foot	Weight (kg)	Supported weight per side (t)	Static test load per side (t)	Mounting height BH (mm)	Dimension A (mm)	Dimension B (mm)
FS07501121000	FS07501122000	A	26,7	12	20	930	455	260
FS07502121000	FS07502122000	A	26,1	12	20	880	405	260
FS07503121000	FS07503122000	A	25,5	12	20	830	355	260
FS07504121000	FS07504122000	A	23,9	12	20	780	305	210
FS07505121000	FS07505122000	A	23,3	12	20	730	255	210
FS07501171000	FS07501172000	T	25,8	12	20	930	455	260
FS07502171000	FS07502172000	T	25,2	12	20	880	405	260
FS07503171000	FS07503172000	T	24,6	12	20	830	355	260
FS07504171000	FS07504172000	T	22,9	12	20	780	305	210
FS07505171000	FS07505172000	T	22,3	12	20	730	255	210

Notes

- Not suitable for ferry operations
- 2 drop legs required per trailer
- Only available for towing vehicles with pneumatic suspension

FA 027 Drop leg aluminium

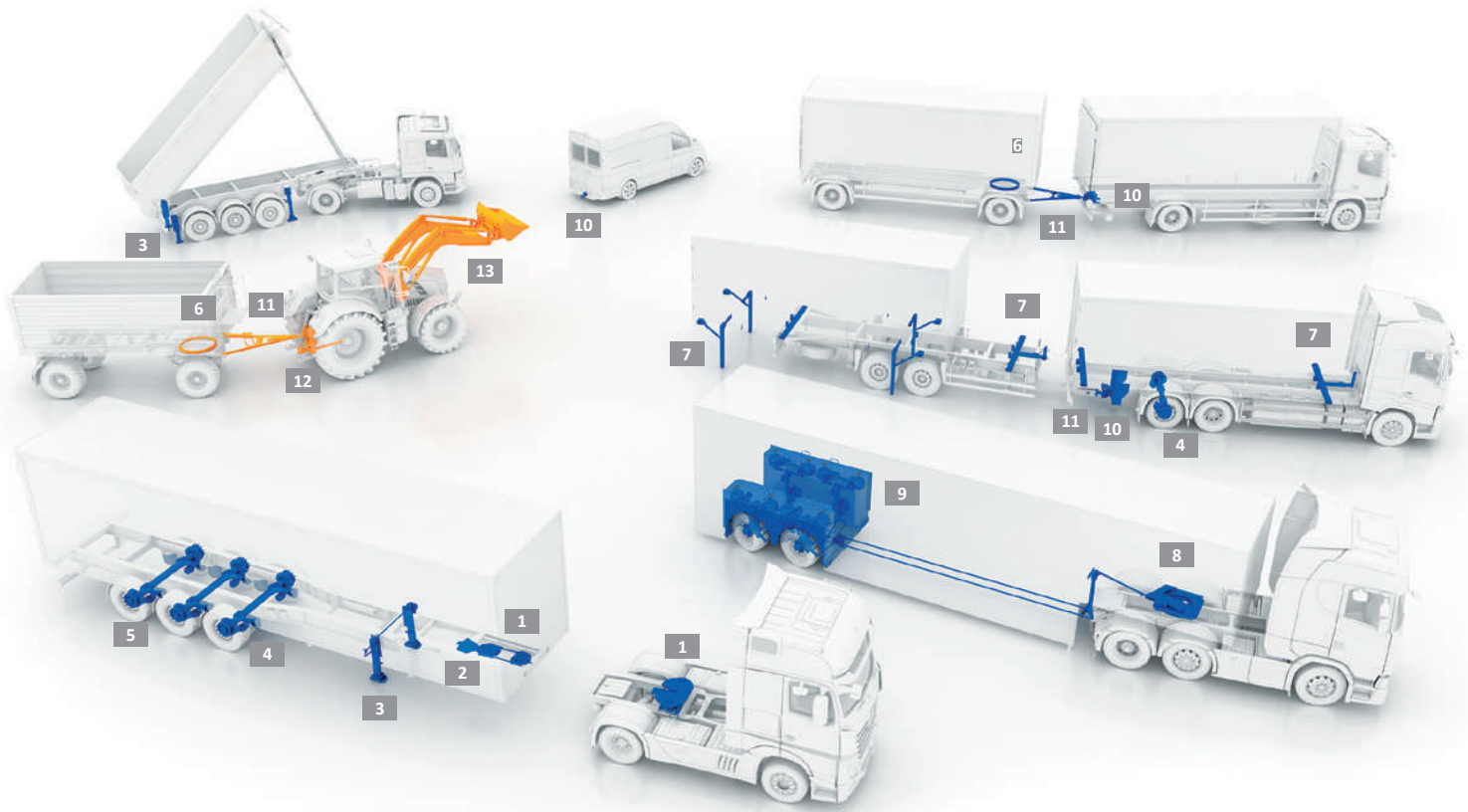
Technical specifications



Order No.	Foot	Weight (kg)	Supported weight per side (t)	Static test load per side (t)	Mounting height BH (mm)	Dimension A (mm)	Dimension B (mm)
FA027A930	A	21,4	12	16	930	912	260
FA027A880	A	20,7	12	16	880	862	260
FA027A830	A	20,0	12	16	830	812	260
FA027A780	A	18,7	12	16	780	762	210
FA027A730	A	18,0	12	16	730	712	210

Notes

- Not suitable for ferry operations
- 2 drop legs required per trailer
- Only available for towing vehicles with pneumatic suspension



Transport

JOST

- 1-3 Systems
- 1 Fifth wheel couplings
- 2 King pins
- 3 Landing gears
- 4 Truck and Trailer axles
- 5 Hubodometers
- 6 Ball bearing turntables
- 7 Container technology

TRIDEC

- 8 Steering systems
- 9 Axle suspensions

ROCKINGER

- 10 Towing hitches
- 11 Drawbars and towing eyes

Agriculture

JOST

- 6 Ball bearing turntables

TRIDEC

- Axle suspensions

ROCKINGER

- 11 Drawbars and towing eyes
- 12 Coupling systems

Quicke

- 13 Front loader and implements